


CL & GR TOTAL  
THIS SHEET  
1.0257 ha.\*

\* CLEARING AND GRUBBING TO TAKE PLACE FROM THE  
EXISTING PAVEMENT EDGE TO A 0.5m OFFSET FROM THE  
RIGHT OF WAY WITHIN THE LIMITS OF CONSTRUCTION

PAVEMENT REMOVAL AREA

FOR PROFILES SEE  
DWGS R3-0388-201 TO 203  
FOR GEOMETRICS & LANING SEE  
DWGS R3-0388-401 TO 402  
FOR DRAINAGE SEE  
DWGS R3-0388-701 TO 702


SCALE			
0 5 1:500 25m			
CAD FILENAME		R3-0388-100	
FILE NUMBER		2026-05-08	
PLOT DATE		2026-05-08	
REV	DATE	REVISIONS	NAME



BRITISH  
COLUMBIA

MINISTRY OF TRANSPORTATION  
AND TRANSIT

NORTHERN REGION  
HIGHWAY ENGINEERING AND GEOMATICS



PLAN

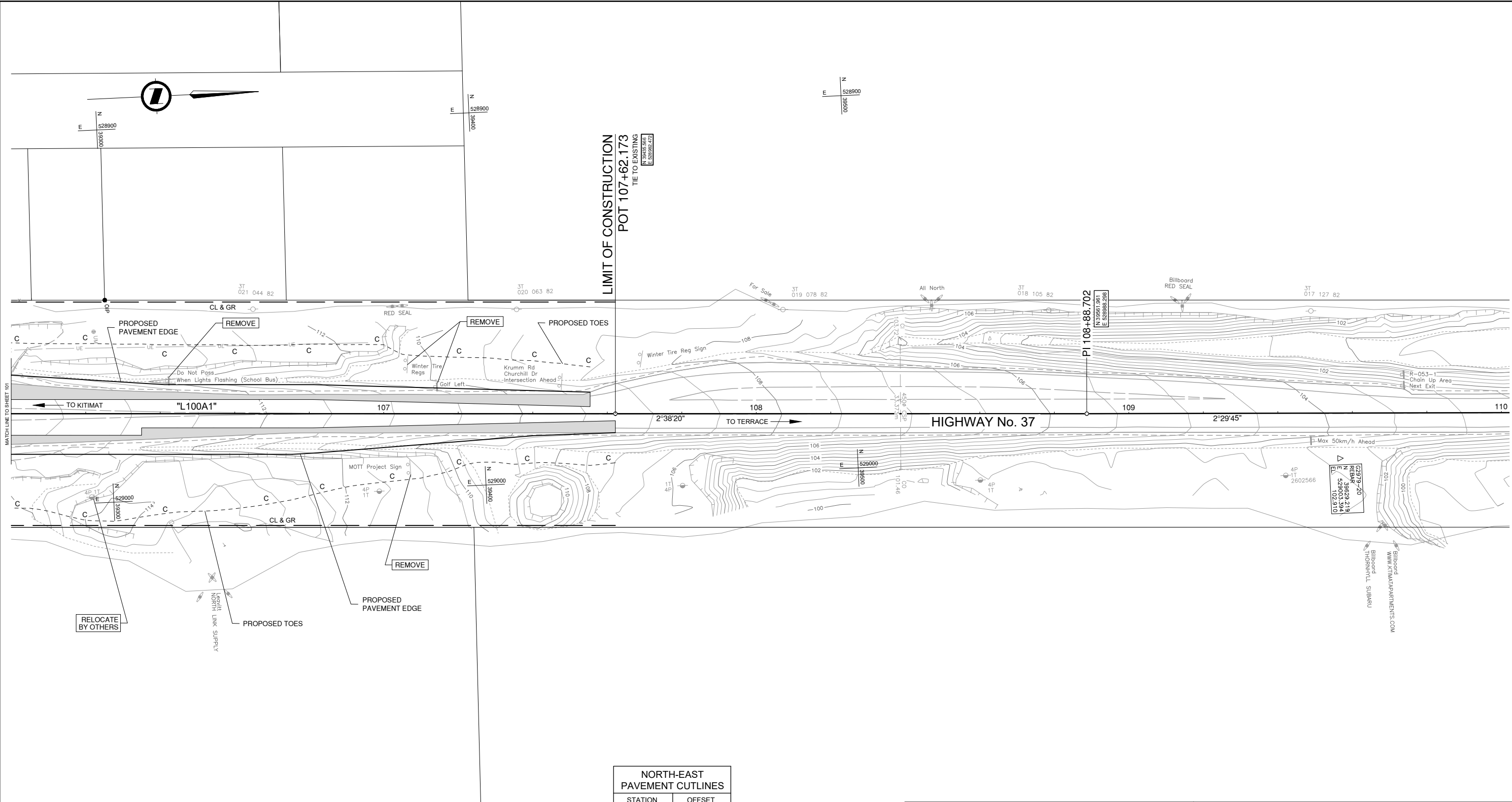
HWY 37 AND KRUMM AVE / CHURCHILL DR  
INTERSECTION IMPROVEMENTS

STA 101+83.000 TO STA 106+00.000

MINISTRY EGBC PERMIT TO PRACTICE 1003429

DESIGNED: C. WATTS DATE: JULY 2025  
QUALITY CONTROL: B. VAN MOOK DATE: JULY 2025  
QUALITY ASSURANCE: B. VAN MOOK DATE: JULY 2025  
DRAWN: C. WATTS DATE: JULY 2025

PROJECT NUMBER: 37995-0000  
REG: NR  
DRAWING NUMBER: R3-0388-101  
REV:



CL & GR TOTAL  
THIS SHEET  
0.7848 ha.\*

\* CLEARING AND GRUBBING TO TAKE PLACE FROM THE  
EXISTING PAVEMENT EDGE TO A 0.5m OFFSET FROM THE  
RIGHT OF WAY WITHIN THE LIMITS OF CONSTRUCTION

PAVEMENT REMOVAL AREA


SOUTH-WEST PAVEMENT CUTLINES	
STATION	OFFSET
1+00.000	2.2 RT
1+14.000	4.6 RT
1+23.000	5.3 RT
1+33.293	1.4 RT

NORTH-WEST PAVEMENT CUTLINES	
STATION	OFFSET
200+96.130	2.1 LT
201+16.000	3.5 LT
105+30.869	7.6 LT
105+95.000	7.6 LT
105+95.000	3.8 LT
106+81.173	3.8 LT
107+55.390	1.9 LT

NORTH-EAST PAVEMENT CUTLINES	
STATION	OFFSET
201+69.448	4.01 LT
201+56.148	4.45 LT
201+47.250	11.09 LT
105+33.000	11.0 RT
105+45.000	8.5 RT
105+70.422	7.6 RT
105+90.000	7.6 RT
105+90.000	5.8 RT
106+35.000	5.8 RT
106+35.000	3.8 RT
106+81.173	3.8 RT
107+62.173	1.9 RT

SOUTH-EAST PAVEMENT CUTLINES	
STATION	OFFSET
103+66.818	3.6 RT
104+16.818	5.8 RT
104+50.000	5.8 RT
104+50.000	7.6 RT
104+95.000	7.6 RT
201+44.914	4.87 RT
201+59.877	1.08 RT
201+95.947	1.8 RT

SCALE 0 5 1:500 25m			
CAD FILENAME		R3-0388-100	
FILE NUMBER			
PLOT DATE		2026-05-08	
REV	DATE	REVISIONS	NAME



MINISTRY OF TRANSPORTATION  
AND TRANSIT

NORTHERN REGION  
HIGHWAY ENGINEERING AND GEOMATICS

PLAN

HWY 37 AND KRUMM AVE / CHURCHILL DR  
INTERSECTION IMPROVEMENTS

STA 106+00.000 TO STA 110+00.000

MINISTRY EGBC PERMIT TO PRACTICE 1003429

DESIGNEDC. WATTSDATEJULY 2025

QUALITY CONTROLB. VAN MOOKDATEJULY 2025

QUALITY ASSURANCEB. VAN MOOKDATEJULY 2025

DRAWNC. WATTSDATEJULY 2025

PROJECT NUMBER37995-0000

REGNR

DRAWING NUMBERR3-0388-102

REV